



Introducing **MyFlix**

MyFlix is a complete MPEG-1 video exploration tool.

With **MyFlix** you can

- play videos in real-time with sound,
- quickly and accurately get to any location in a video,
- play a presentation as a continuous loop or analyze the action of your favorite sports star using the Auto Repeat feature.
- cut and paste from separate videos to create your own custom video,
- find key video events, such as film cuts to create a shot index of your video.

This means that the entire video is at your fingertips – from extracting your favorite frames as snapshots to put in your photo album to combining those special moments in your existing videos into your own movie creation.

- Best of all **MyFlix** requires no special hardware to run on your computer.

If you require extended image analysis and more content based search tools have a look at the companion product [WebFlix Pro](#).

How **MyFlix** Helps You Work With MPEG Videos

Have you ever tried to find a particular location in a video on your VCR, 35 MM film or even an MPEG file using standard searching techniques? Usually this involves watching the entire movie in fast forward or normal speed, then going back to painstakingly mark and edit the parts you want.

- With **MyFlix**, the pain of this slow review and video searching is removed. **MyFlix** does the work for you by finding shots throughout the video and providing extended player controls to help you explore your video. Once calculated a shot index can be saved, edited and used as a movie summary to quickly show others what's in your video.
- **MyFlix** can play your movie backwards as well as forwards, fast or normal speed and jump to any frame you like. You can even repeat play any section over and over to study a certain action sequence.

MyFlix supports MPEG editing, so that you can rearrange your footage from several movie files in to your own video masterpiece.

Limitations of the Demo Version

The demonstration version of **MyFlix** is identical to the full version you get when you register *except* for the following functions which are not present:

- *Generate movie*: you cannot create a new movie,
- *Save snapshot*: you cannot save the current frame as a JPEG or TIFF snapshot,
- *Save shot index*: you can use the Shot Tool to find shots, but you cannot save a shot index.

Run this demonstration version as our guests for two weeks to find out whether **MyFlix** is for you or not.

If you are considering buying **MyFlix** here are some important factors you should consider.

- If you agree with us that **MyFlix** provides a unique and powerful combination of MPEG player, exploration and editing tools, purchase a fully registered copy through the MediaWare Solutions web site at <http://www.mediaware.com.au>.

Thinking of Purchasing MyFlix?

When you purchase a registered copy of MyFlix you get the full benefits of being able to:-

- play videos in real-time with sound,
- quickly and accurately get to any location in a video,
- play a presentation as a continuous loop or analyze the action of your favorite sports star using the Auto Repeat feature.
- cut and paste from separate videos to create your own custom video,
- find key video events, such as film cuts to create a shot index of your video.

Concerned about buying technology that could rapidly become outdated? Don't be:-

- We at MediaWare Solutions pride ourselves on the quality of our innovative technology and our Shot Detection algorithms represent the leading edge.
- MediaWare Solutions is constantly striving to make our products the best and most reliable that you can buy – so we release updates of our products at regular intervals.
- ***Our guarantee to you*** is that you are entitled to updates of MyFlix – for example if you buy version 1.4 of MyFlix you can download the current version at any time and you can be sure of benefiting from running the latest and very best version of MyFlix all the way up to **version 1.99**.

So why wait? - purchase a fully registered copy of MyFlix through the MediaWare Solutions web site at <http://www.mediaware.com.au>

Recommended System Requirements

- Windows NT 4.0 or Windows 95
- Intel Pentium processor – 133MHz or faster
- 32MB memory
- 24 bit graphics (16, 24 and 32 bits are supported)
- Compatible sound card
- Microsoft ActiveMovie v1.0 or v2.0

Installation

Installation of **MyFlix** is performed by InstallShield™.

- If you accepted the defaults during installation, selecting **Start->Programs->MediaWare Solutions->MyFlix** from the Windows Start menu will show you the **MyFlix** Program Folder consisting of
 - **MyFlix** - the program,
 - *ReadMe.txt* - contains the release notes
 - *MyFlix.hlp* - this Help guide.
- Take a few moments to review *ReadMe.txt* for any last minute changes and enhancements that didn't find their way into this help guide.

To make the most of **MyFlix** we suggest a minimum recommended configuration for your computer system.

User Preferences

You can customize your copy of **MyFlix** by saving your preferences. This is done through the Options menu which allows you to choose and save for example:

- the folder where data files are saved by default
- whether the player rewinds automatically when it gets to the end of a video
- whether player repeat mode is on or not

Starting MyFlix

You start **MyFlix** through Windows Toolbar just like any other Windows program - simply click on

Start->Programs->MediaWare Solutions->MyFlix->MyFlix

or you can double click on the **MyFlix** icon in Explorer or My Computer. Note that if you over-rode the defaults during installation then your copy of **MyFlix** may appear in a different location in the Start menu.

The first time you start **MyFlix** you will be greeted with a Slide Show covering **MyFlix**'s major features.



After you have finished with the slides, you can start **MyFlix**.

Loading a Movie

To load a movie, click on the Load File option from the File menu. The file browser will enable you to select a disk drive and path and choose any file MPEG file to load.

- Valid MPEG-1 files have a *.mpg* extension.
- After loading the file the first frame will fill the display window and you can then play, analyze or edit your video.
- When loading large movies for the first time you may experience a short delay while **MyFlix** computes an index file. The index file gives you the benefits of reliable and fast random access to any frame of the movie. Next time you load that movie that same index file is re-used.
- Index files have an *.idx* extension and use the same base name as the movie. For example if you load the movie *MyMovie.mpg* **MyFlix** will generate and save the file *MyMovie.idx*.

Detaching/Attaching the Display Panel

Detaching the Display Panel is useful when you are working with a large movie or you are using the Editor at the bottom of the **MyFlix** window.

- click on File Menu->Detach to detach the Display Panel
- click on File Menu->Attach to re-attach the Display Panel





Playing a Movie

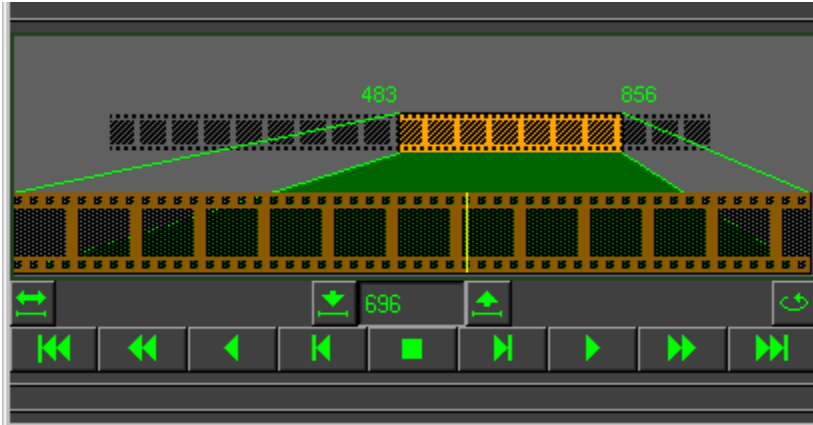
Playing a movie is done with the VCR-like controls in the Player Panel. You use the Player Controls to explore your movie interactively in normal, single-step, fast, backwards or forwards modes.

You can use the Shot Tool to help you get a handle on the contents of your movie and the Editor to rearrange your content into movie masterpieces.

Player Controls

MyFlix allows you to explore your video with an unprecedented degree of control and precision. In addition to the standard VCR-like controls functions you are already familiar with **MyFlix** equips you with additional controls that allow you to jump to any frame, play a selected region of a movie, play your video backwards or even loop over a section using Auto Repeat!

- Click on the individual controls of the screen shot to find out what each control does.



In this example, the Clip is focused on frames 483 to 856 of the movie and the Current Position is frame 696 which would be seen in the Display Window (not shown here).

Auto Repeat: creates a loop out of the currently selected clip. If you are playing then when it gets to the end of the clip it will automatically rewind and start playing again from the start of the clip.

In fact this looping behavior of **Auto Repeat** works with all playing modes – for example if you step *back* from the first frame of the clip then you will find yourself at the *end* of the clip.

Auto Repeat is off when you start. To turn it on left click the Auto Repeat button once – it will light up. To turn it off left click again – the light will go off.

Play Backwards: plays the video (without sound) from the Current Position towards the Clip Start. The player plays all the frames and so the play rate will depend on the speed of your computer.

You can pause the player by clicking on any of the player controls.

Play Forwards: plays the video (with sound) from the Current Position towards the Clip End. The player may drop frames in order to maintain real-time play. The faster your computer, the less frames will be dropped and the smoother the motion will appear.

You can pause the player by clicking on any of the player controls.

Current Position: this is the position of the Frame Cursor within the Clip. The Display Panel always displays the frame from the Current Position and Frame Counter shows the number of the frame at the Current Position.

Fast Backwards: skips quickly backwards through the movie from the Current Position towards the Clip Start.

You can pause the player by clicking on any of the player controls.

(Details: Fast Backwards works by only playing the I-frames, so the observed speed depend not only on the speed of your computer but also on the content of the movie and how it was originally encoded)

Fast Forwards: skips quickly forwards through the movie from the Current Position towards the Clip End.

You can pause the player by clicking on any of the player controls.

(Details: Fast Forwards works by only playing the I-frames, so the observed speed depend not only on the speed of your computer but also on the content of the movie and how it was originally encoded)

Step Forwards: steps forward one frame at a time through the movie from the Current Position towards the Clip End. Moves one frame each time you click the button.

(Details: all frames are played - I, B and P).

Step Backwards: steps backward one frame at a time through the movie from the Current Position towards the Clip Start. Moves one frame each time you click the button.

(Details: all frames are played - I, B and P).

Pause: stops the movie at the current position.

You can also pause the movie by clicking on any of the player buttons.

Go To Start: moves to the start of the Clip.

(Details: after repositioning, the Frame Counter and Cursor are positioned at the Clip Start).

Go To End: moves to the end of the Clip.

(Details: after repositioning, the Frame Counter and Cursor are positioned at the Clip End).

Clip Start: the first frame in the Clip.

Clip End: the last frame in the Clip.

Reset: selecting reset returns the interface to the same state as when the current movie was first loaded.

(Details: after resetting, the Frame Counter and Cursor are positioned at the first frame in the movie, the Clip in the Focus Strip is set to the full movie).

Select Clip End: sets the Clip End to the Current Position.

(Details:, loads the frame number in the Frame Counter into the Clip End).

Select Clip Start: sets the Clip Start to the Current Position.

(Details:, loads the frame number in the Frame Counter into the Clip Start).

Frame Cursor: this is the yellow vertical marker in the Focus Strip which shows the Current Position within the Clip. You can drag it with the left mouse button to any frame in the Clip.

Master Strip: represents the entire movie that is currently loaded. The orange section shows you where in the movie the currently selected Clip is coming from.

Focus Strip: holds the Clip currently being worked on.

The Focus Strip allows you to select and work on a region of the full movie in greater detail. The Clip Start and Clip end are used to define this region.

Frame Counter: displays the frame number of the current frame.

[return to the previous slide](#)

go to the next slide

exit the Slide Show and start **MyFlix**

Using the Shot Tool

The Shot Tool can quickly summarize your movie for you by representing it as a series of still frames corresponding to the individual shots that make up the movie. Shot Tool analyzes the movie for you using the latest technology for detecting the abrupt changes between shots.

- To automatically generate a Shot Index you must first load the target movie. Then move to the Shot Tool menu and select the “Find cuts” option from the “Generate shot index” sub-menu.
- A progress bar will track the cut detector as it works through the movie looking for those special frames that mark the transitions between adjacent shots. When it has finished, these frames are displayed as thumbnails in the Shot Index Strip.



You can slide the Shot Index Strip back and forth to browse the thumbnails.

To view a particular thumbnail at full resolution, simply click on the thumbnail of interest and it will appear in the Display Panel. The corresponding frame number will become the current frame number in the frame number display.

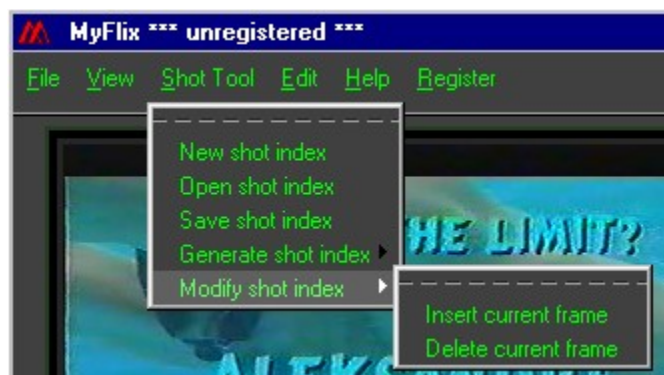
Creating a Shot Index for a movie makes it dramatically easier to keep track of what's in a particular movie. You can go straight to the Shots that you want to play, review and ultimately combine with shots from other movies to create your own masterpiece using the **MyFlix** Editor.

You can modify the Shot Index directly yourself by first selecting a thumbnail and then:

- removing thumbnails that you don't want and
- adding thumbnails that you want to insert.

Once you have got a representative series of thumbnails you can save a Shot Index and load it again in another session. You will find these options under the Shot Tool menu.

(Note that the companion product **WebFlix Pro** can also detect shots in movies that use *dissolves* instead of *cuts* to gently transition from one shot to the next)



Browsing Thumbnails

To browse the thumbnails first move the mouse cursor so it points to the sprocket holes at either the top or the bottom of the Shot Index Strip,



and then either

for fine control: drag the thumbnails from side to side through the viewing area with the left mouse button, or

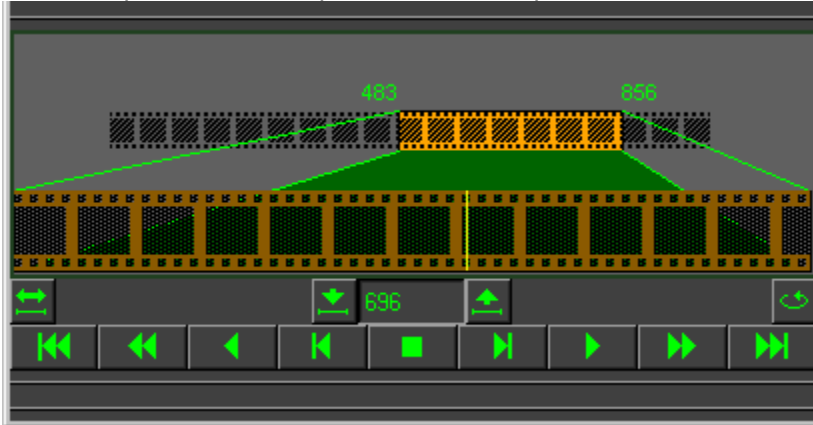
for coarse control: click the right mouse button -

- near the left side of the Shot Index Strip to jump close to the beginning of the Shot Index Strip
- near the middle of the Shot Index Strip to jump close to the middle of the Shot Index Strip
- near the right side of the Shot Index Strip to jump close to the end of the Shot Index Strip

For example if you have generated 100 thumbnails and you right click the sprocket holes approximately in the middle of the visible region, the strip will reposition to approximately the 50th thumbnail. Clicking at the one quarter mark will move you approximately to the 25th thumbnail, the three-quarter mark to the 75th thumbnail.

Selecting Clips

The **MyFlix** Clip Control interface features two film strips – the Focus Strip at the front and the Master Strip at the back. The Master Strip always represents the full movie and the Focus Strip allows you to define a sub-region or Clip that you can select to be the current the focus of attention. The Player Controls operate on the Clip in the Focus Strip.



0 When you first load a movie or following a Reset, the Clip in the Focus Strip defaults to the entire movie – the Master Strip and Focus Strip both contain the full movie.

1 To explore a particular part of a long movie, it is convenient to define a Clip. There are two basic methods:

- Dragging the mouse on the Master Strip and
- Entering the frame numbers for the Clip Start and Clip End.

There are variants of these methods that can be very useful:

- Moving the Clip Position and
- Adjusting the Clip Start and Clip End.

The Shot Index can also help you to define Clips. After using the Shot Tool to build a Shot Index, simply click any thumbnail to instantly jump to that frame which you can then use as a Clip Start or Clip End frame.

After defining a Clip the player will be positioned at the first frame of the Clip. The position of the Clip within the movie is indicated by the orange section in the Master Strip.

Dragging the mouse on the Master Strip: left click the mouse on the Master Strip and then holding down the left mouse button, drag the mouse left or right to define a region (the Clip) on the Master Strip.

As you drag the mouse you will see the *Clip Start* and *Clip End* frame numbers changing.

Moving the Clip Position: if you have already defined a Clip of 100 frames but you want to look at another part of the movie keeping 100 frames in the Clip at any one time, you can drag the orange section along the Master Strip by pressing the *Ctrl* key simultaneously with left mouse clicking the orange section and dragging.

Adjusting the Clip Start and Clip End: if you have already defined a Clip but you want to fine tune the Clip Start or Clip End with the mouse but without starting again: you can drag either end of the orange section along the Master Strip by pressing the Shift key simultaneously with left mouse clicking either end of the orange section and dragging.

Entering the frame numbers for the Clip Start and Clip End: use the VCR Player Controls to position the movie where you would like the Clip to start – then click the *Select Clip Start* button to make the current frame number the Clip Start. Repeat the process for the Clip End. (TIP: when you are selecting Clips for editing you can use the Player Controls to single-step frame at a time to find exactly the frame you want)

Clip: a sequence within a movie that *you* consider to be of interest.

Starting the Editor

The Editor allows you to be creative with your video content.

To start the editor, you must have a movie loaded. Then use the Edit menu to create a new Edit List. A new panel will open as shown:



You may well want to detach the Display Panel and reorganize your desktop at this point if the Editor Panel extends off the bottom of your screen.

You can now create new MPEG-1 movies, either using:

- Single Source Editing (selecting and copying one or more shots from a single movie), or
- Multiple Source Editing (selecting and copying shots from multiple source movies).

Single Source Editing

Before you can start editing you must have already

- loaded the source movie and
- started the Editor

You generate your new movie from a list of Clips that *you* specify:

- select a clip you want to copy from the source movie
- place the Clip into the Edit List using the Editing Controls



- repeat the two steps above for all your Clips
- generate the new movie

In this example we have selected three clips from the source movie ACT.mpg and inserted them into the Edit List. We then click on *Generate output* to create a the new movie with 4353 frames.

Note that you can add Clips in any order – the new Clip is always inserted *before* the selected Edit List line.

Insert clip

Replace clip

Delete clip

Generate output

src file	src in	src out	rec in	rec out
/WebFlix/data/ACT.mpg	1979	3105	0	1126
/WebFlix/data/ACT.mpg	5347	7465	1127	3245
/WebFlix/data/ACT.mpg	2262	3369	3246	4353

Multiple Source Editing

Multiple Source Editing combines Clips from more than one source movie.

Proceed as you would for Single Source Editing. When you select your Clips you can load different source movies.

In this example we have just inserted a Clip from a movie popov.mpg into an edit list already containing three Clips from ACT.mpg.

src file	src in	src out	rec in	rec out
/WebFlix/data/ACT.mpg	1979	3105	0	1126
ebFlix/data/popov.mpg	3321	4994	1127	2800
/WebFlix/data/ACT.mpg	5347	7465	2801	4919
/WebFlix/data/ACT.mpg	2262	3369	4920	6027

GOP or Frame Accurate?

In MPEG-1 movies, frames are grouped together in a GOP or *Group Of Pictures*. GOPs are fundamental units in MPEG streams and their effect on the editing process should be understood.

MyFlix supports both GOP accurate and Frame accurate editing.

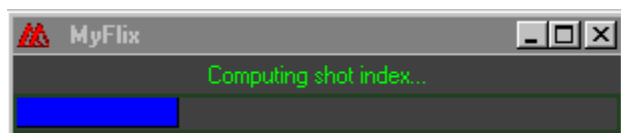
If you choose an edit point that happens to coincide with a GOP boundary, then Frame and GOP accurate editing are the same. If however, as is more often the case, you choose an arbitrary point in the movie then you need to choose between GOP and Frame accurate editing as it will have an impact on the quality of your generated movie at the editing points:

- GOP accurate editing means that **MyFlix** will move the edit point to a GOP boundary rather than the exact frame chosen by the user. The advantage is that higher quality can be achieved in the generated movie without an increase in the bit rate. However this may result in frames being included in the output which you don't want.
- Frame accurate editing means that the clips you select will start exactly at the frame number you specify, but at the possible cost of some image quality and a small increase in the file size. This is due the extra decoding and re-encoding of the frames required to construct a legal GOP.

The switch for Frame or GOP accurate editing is accessed through the Edit menu.







File Menu

Load Movie:

Loads a new MPEG movie file.

Next time you load a movie in the current session, the file loader returns you to the same folder.

Save Snapshot (JPEG):

Saves the current frame as a JPEG file.

Save Snapshot (TIFF):

Saves the current frame as a TIFF file.

Quit:

Exits from the current session of **MyFlix**.

View Menu

View Size +:

Doubles the display size.

View Size reset:

Set display size to original.

View Size -:

Halves the display size.

View Attach/Detach +:

Toggles between detaching and attaching the movie display.

Shot Tool Menu

New Shot Index

Clear the current Shot Index and start a new one.

Open Shot Index

Load a Shot Index from a file.

Save Shot Index

Save the current Shot Index to file.

Generate Shot Index

Generate an index of all shot boundaries in the current movie.

Modify Shot Index

Manually add and subtract entries from the Shot Index.

Edit Menu

New edit list

Clear the current edit list and start a new one.

Open edit list

Read an edit list from file.

Save edit list

Save an edit list to file.

Close

Close editor.

Frame accurate

Cut at the exact frames specified.

GOP accurate

Use more appropriate points near the specified frames to facilitate smooth cutting.

Help Menu

Quick help

Clear the current edit list and start a new one.

Release notes

View the release notes for this version of **MyFlix**.

About

Show program version.

Register Menu

Test-Drive

How to obtain an evaluation license.

Register MyFlix

How to purchase a permanent license.

